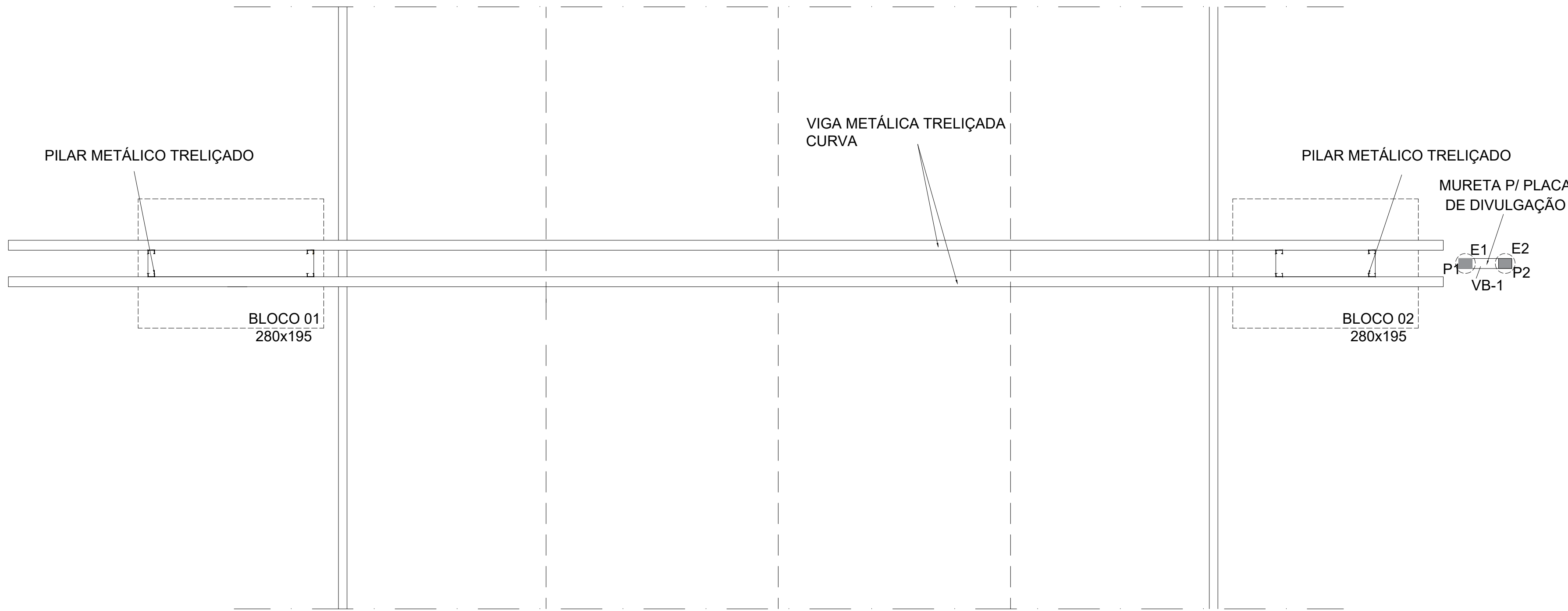
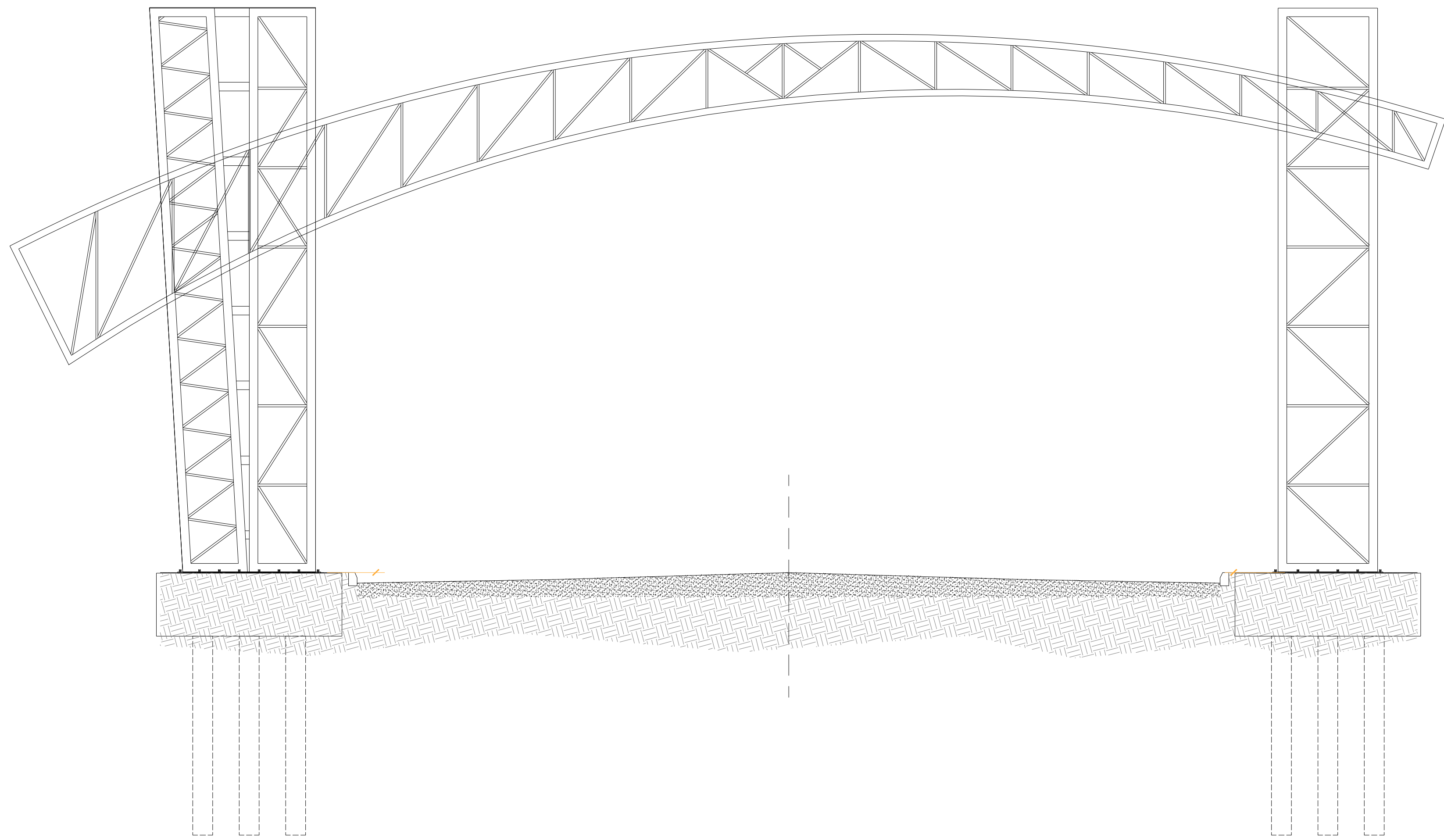


PÓRTICO DE ENTRADA - PLANTA BAIXA ESTRUTURAL

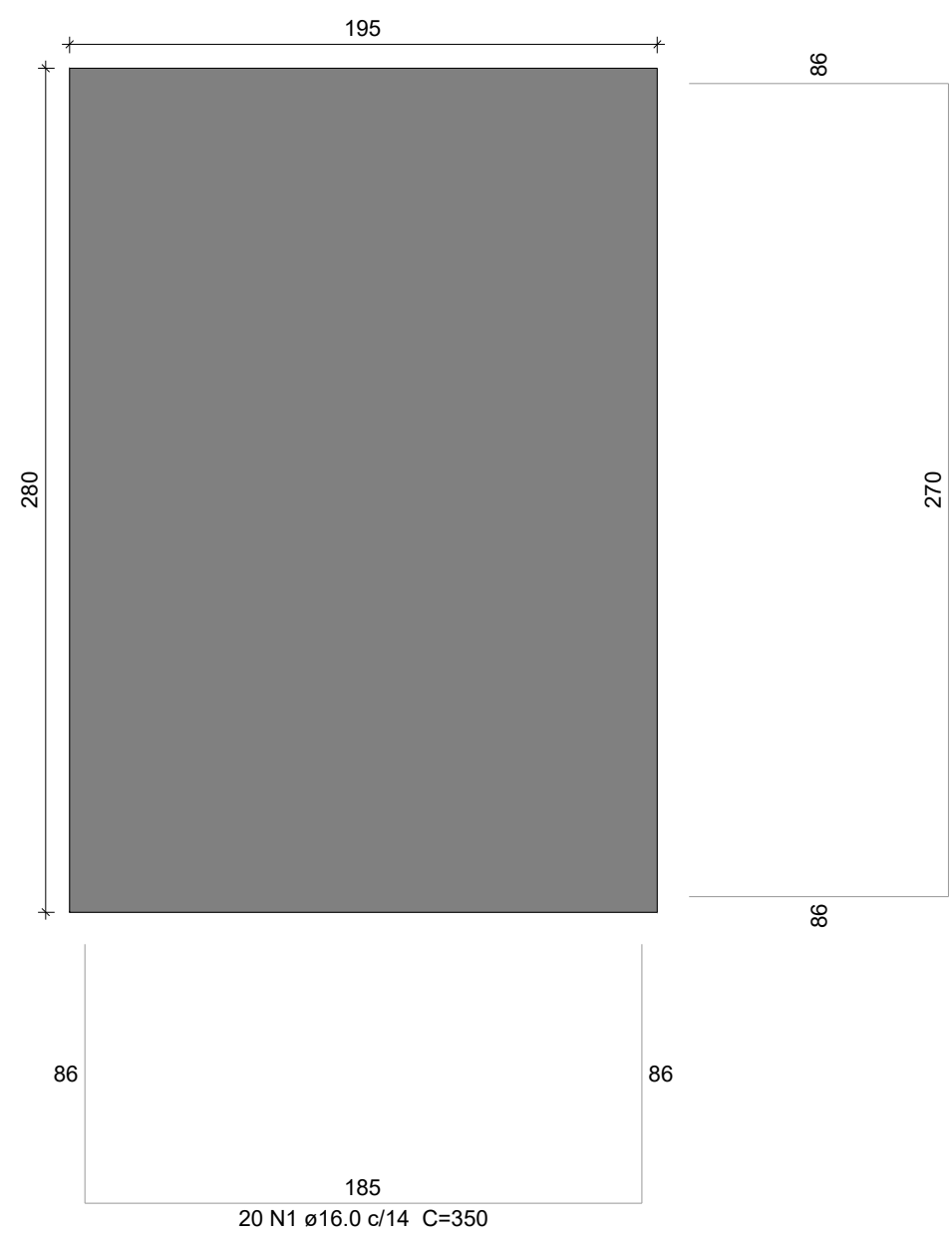


PÓRTICO DE ENTRADA - ESTRUTURA METÁLICA

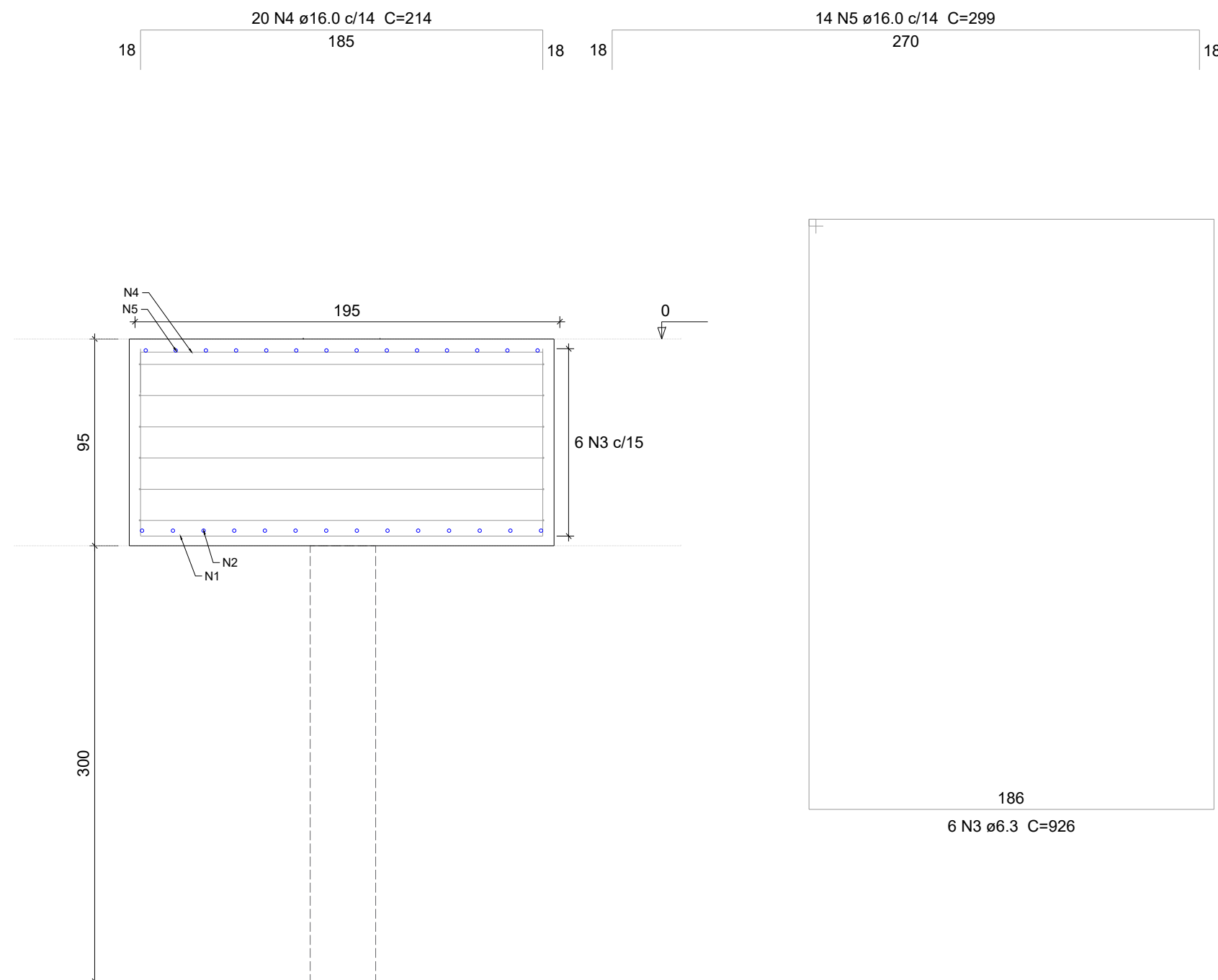


DETALHAMENTO - BLOCOS

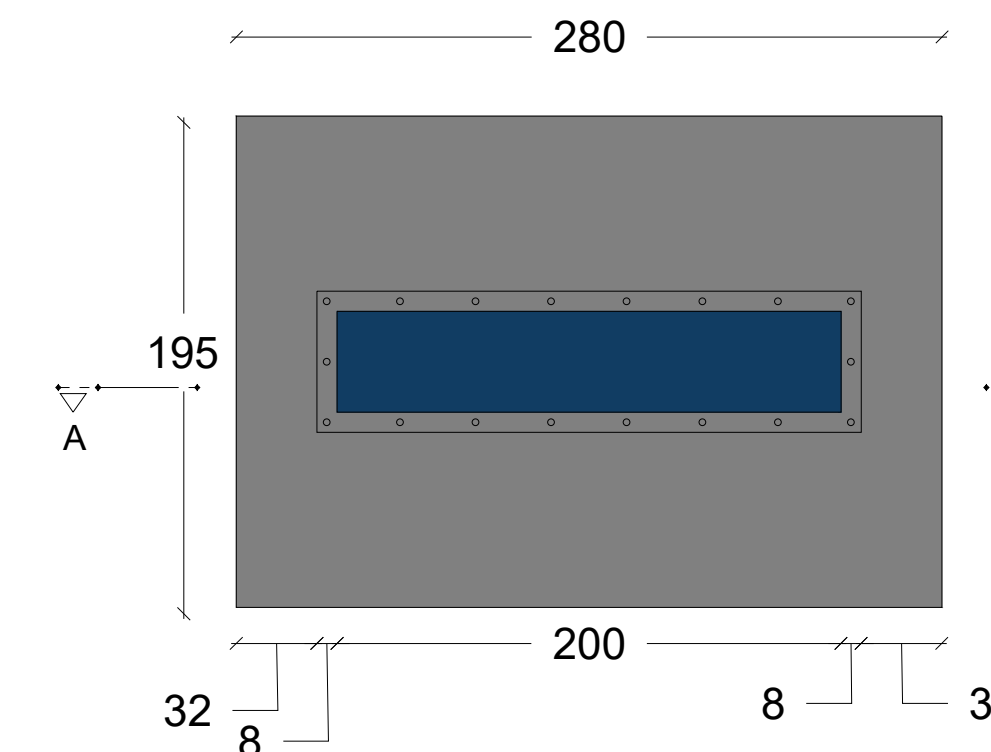
B1=B2  
PLANTA  
ESC 1:25



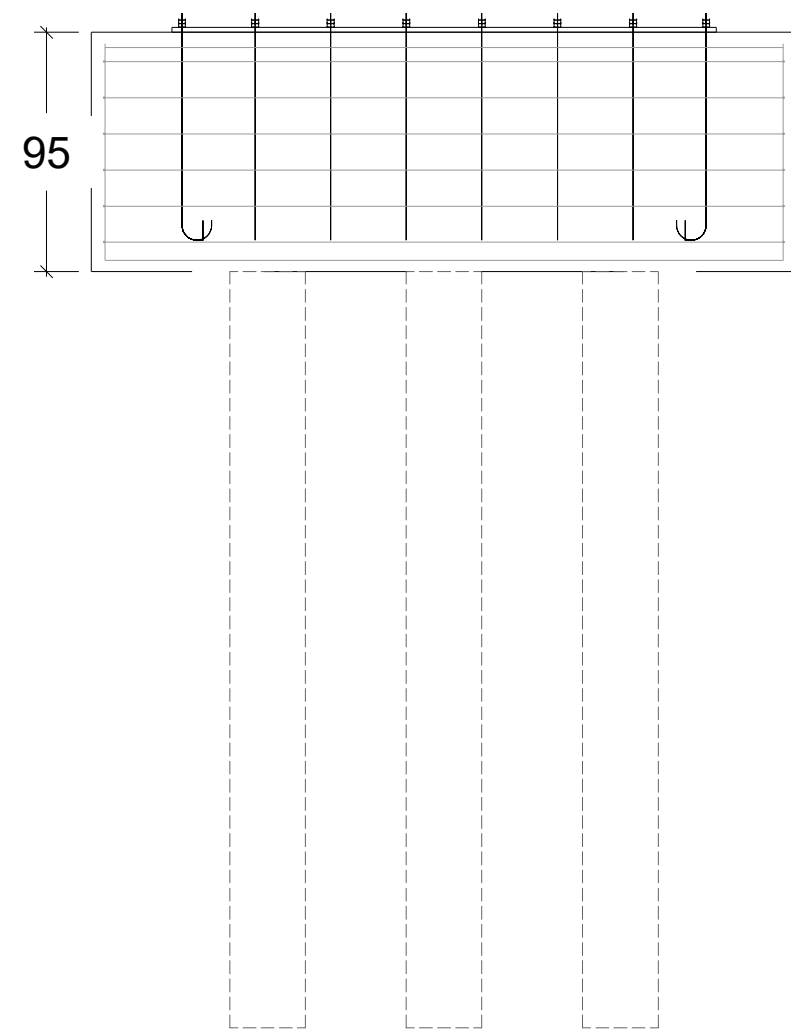
CORTE  
ESC 1:25



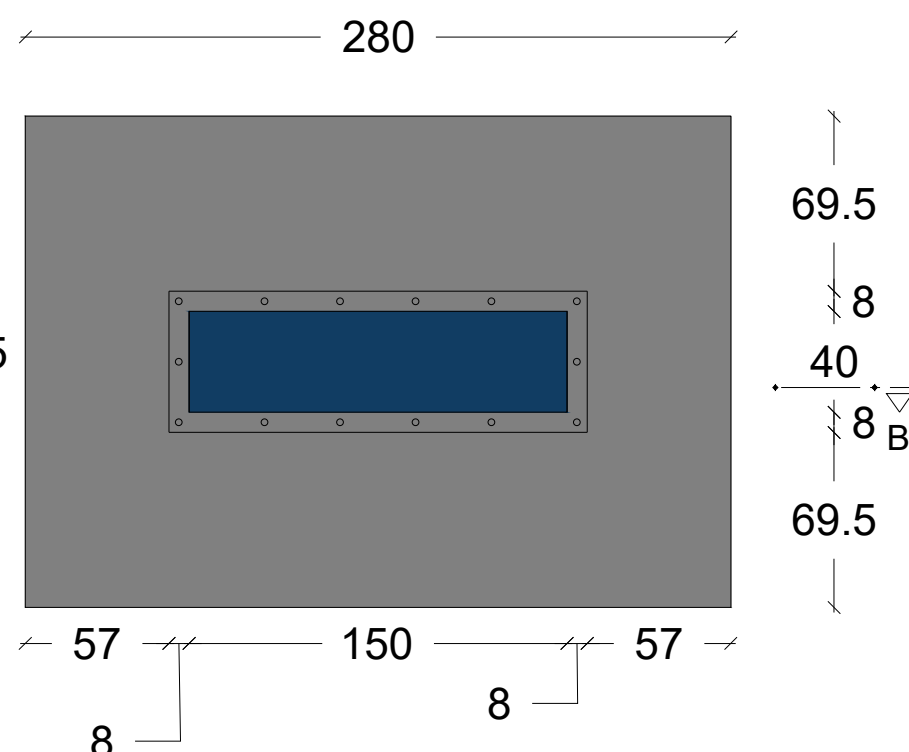
BLOCO - B1



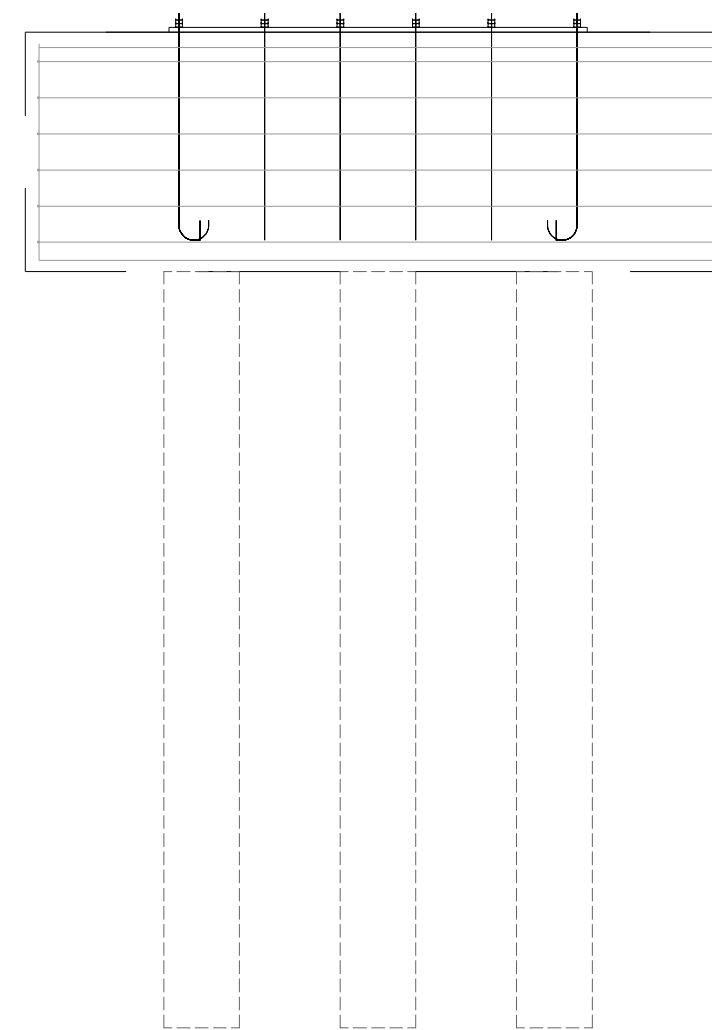
CORTE A-A  
ESCALA: 1/10



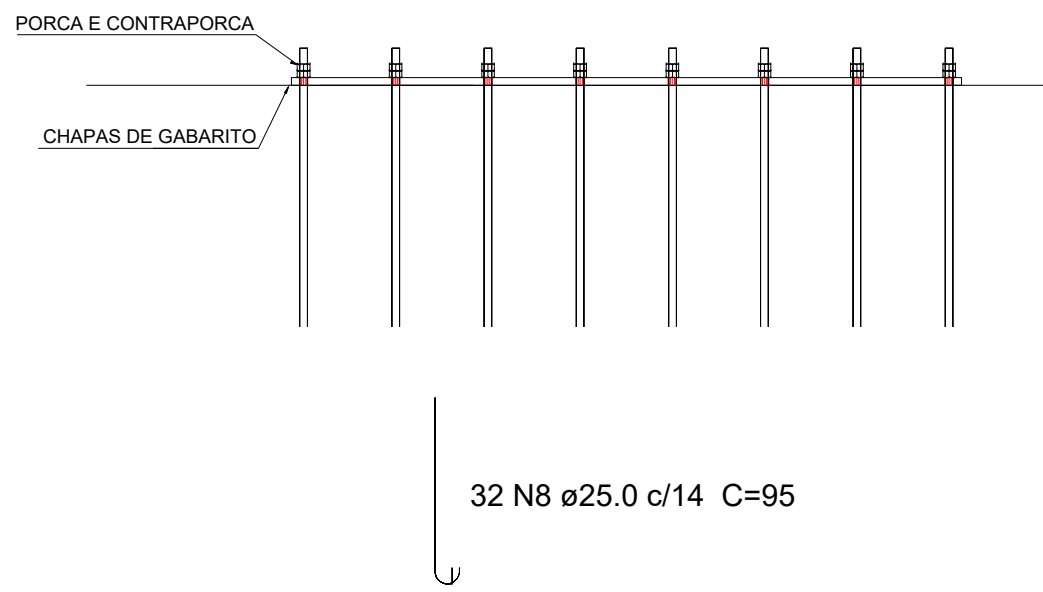
BLOCO - B2



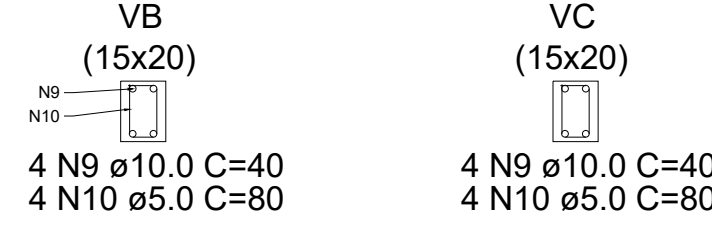
CORTE B-B  
ESCALA: 1/10



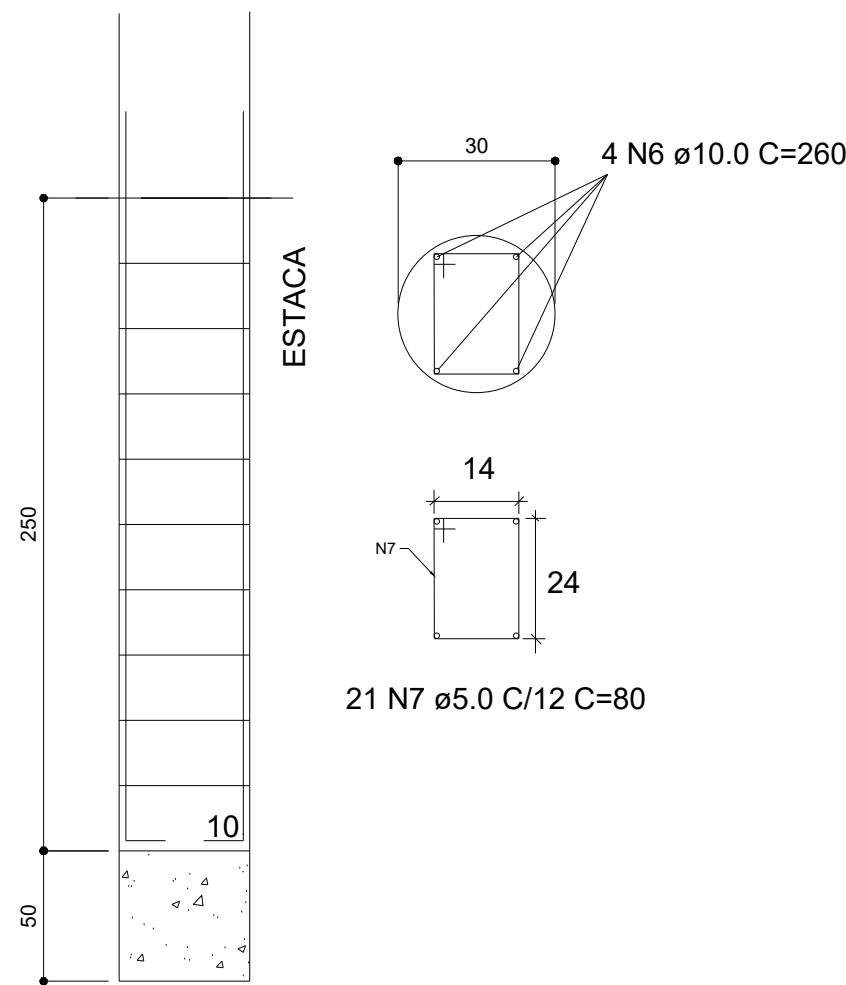
DETALHE 1  
SEM ESCALA



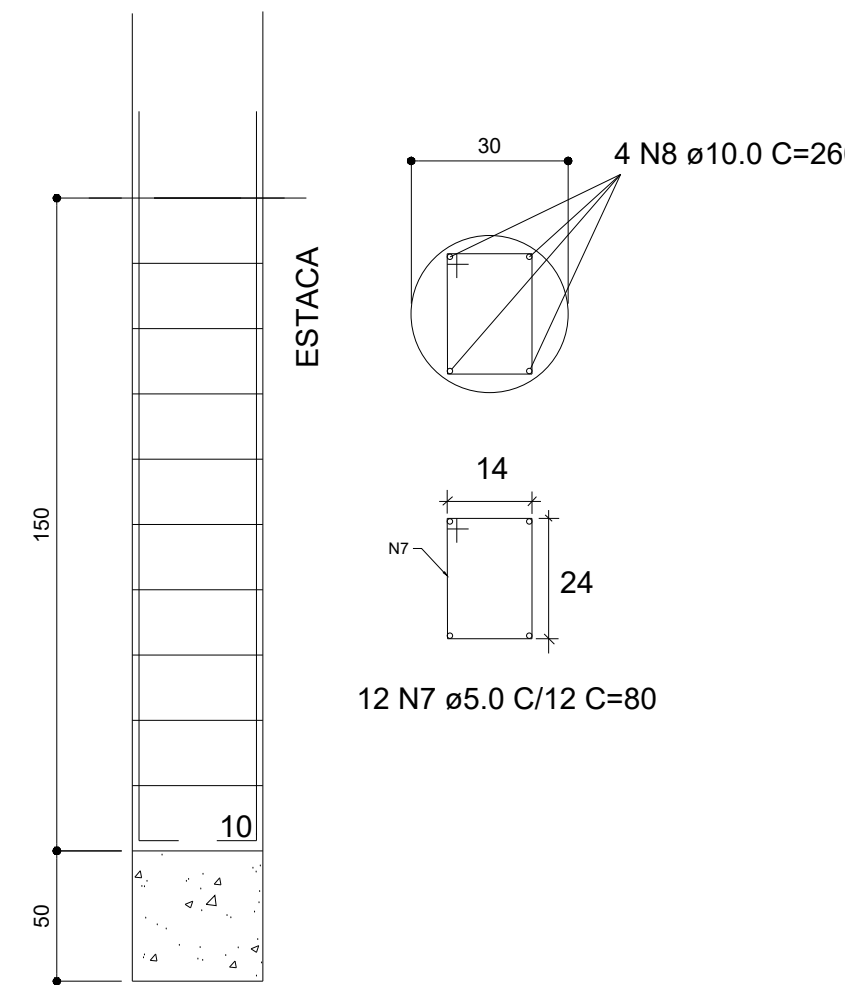
DETALHAMENTO - VIGA  
BALDRAME E CINTAMENTO



DETALHAMENTO - ESTACAS (x6)



DETALHAMENTO - ESTACAS (x2)



DETALHAMENTO - POSIÇÃO DAS ESTACAS

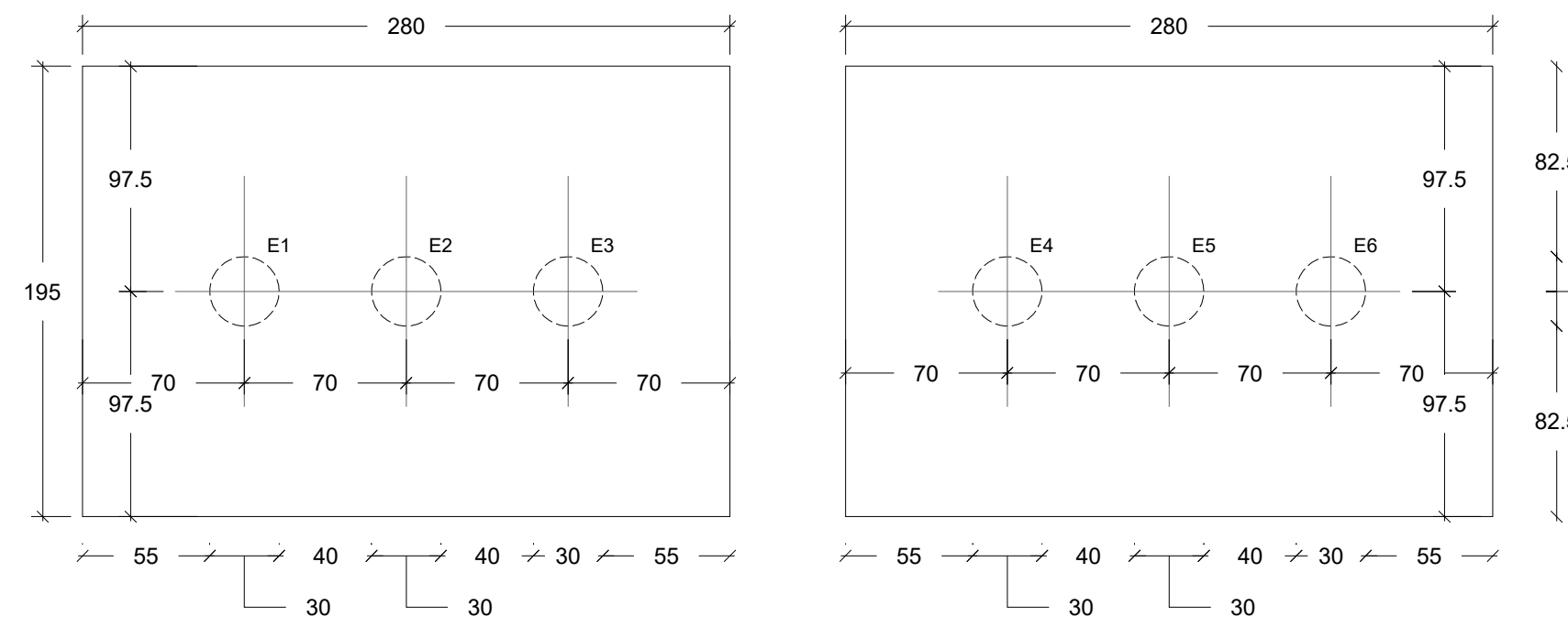


TABELA DE ESTRUTURA METÁLICA

Marca	Compr. total [m]	Peso [kg]
DIAGONAIS - 100x50x17 #2.25	191.48	731.46
MONTANTES - 100x50x17 #2.25	82.14	313.78
PERFIL L - 4"x4" #4.76	223.42	569.72
Peso total: 1614.96 Kg		

TABELA DE AÇO SAE-1020 - CHUMBADORES

N	Pys	a [mm]	Compr. Único [m]	Forma flexão cotado (sem escala)	Compr. total [m]	Peso [kg]
8	32	25	0.95	S	30.40	117.12
Peso total: 117.12 Kg						

TABELA DE AÇO CA-60

N	Pys	a [mm]	Compr. Único [m]	Forma flexão cotado (sem escala)	Compr. total [m]	Peso [kg]
7	150	5.0	0.80	14	120.0	18.48
10	08	5.0	0.80	15	6.40	0.99
12	30	5.0	0.50	15	15.00	2.31
Peso total: 21.78 Kg						

TABELA DE AÇO CA-50

N	Pys	a [mm]	Compr. Único [m]	Forma flexão cotado (sem escala)	Compr. total [m]	Peso [kg]
1	40	16	3.50	165	140.00	220.92
2	28	16	4.35	270	121.80	192.20
3	12	6.3	9.28	271	111.12	27.23
4	40	16	2.14	165	85.60	135.10
5	28	16	2.99	270	83.72	132.11
6	12	10	2.60	260	31.20	19.25
8	08	10	1.50	150	12.00	7.40
9	08	10	0.40	40	3.20	1.98
11	08	10	1.80	180	14.40	8.85
Peso total: 745.08 Kg						

## PROJETO ESTRUTURAL DO PORTAL DE ACESSO À CIDADE

### PREFEITURA MUNICIPAL DE TURVELÂNDIA-GO



ENGENHARIA & CONSULTORIA  
EIRELI - ME  
CNPJ: 26.435.399/0001-27

RUA C-286, S/N, QUADRA 662, LOTE 11, SALA 01 |  
C/P: 14.280-58, GOIÂNIA - GO

PROJETO APROVADO PELA PREFEITURA MUNICIPAL  
EM: 11/01/2023

OBRA:  
CONSTRUÇÃO DE PORTAIS NO MUNICÍPIO DE TURVELÂNDIA - GO

ENDEREÇO:  
GO - 710, KM 388 E KM 389

COORDENADAS:  
-17.81095, -50.166164  
Nº DO CONTRATO:  
XXXXXXXXXX  
Nº DO ART:  
XXXXXXXXXXXXXX

ÁREAS:  
ÁREA DO TERRENO:  
Nº DE PAVIMENTOS:  
ÚNICO  
ESCALA:  
INDICADA  
FOLHA:  
1/1